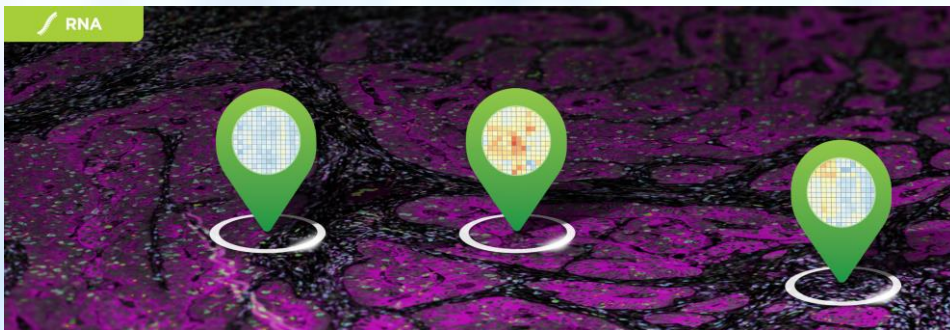
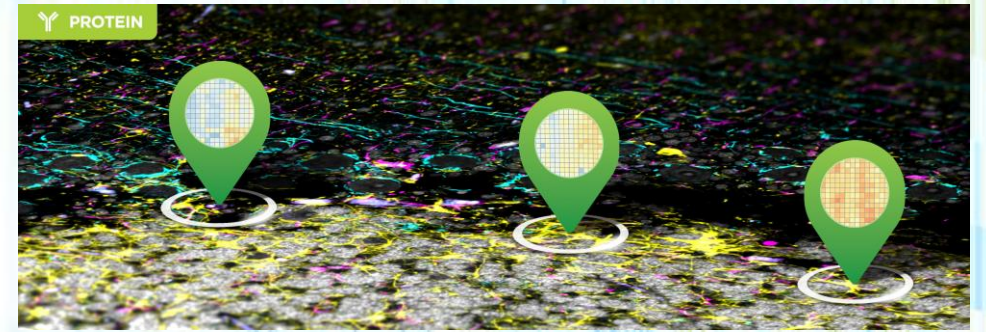


SCIBLU Genomics & NanoString Seminar on Spatial Expression Profiling

Agenda

- 12.00 - 12.30 Light lunch available for registered participants
- 12.30 - 12.45 Information on Spatialomics@LU to be launched spring 2020 at Lund University
Lina Olsson/Sara Ek, Dept. of Immunotechnology
- 12.45 - 13.30 GeoMx DSP technology, Technical Expert nanoString
- 13.30 - 14.00 SpatialOmics using GeoMx DSP in malignant melanoma
Göran Jönsson, Dept. of Oncology and Pathology
- 14.00 - 14.30 Time for questions



Location: Bioforum at Medicon Village, building 406, Lund

Registration

Please register using this link: <https://www.nanostring.com/LundUniversity>

Additional information: sciblu@immun.lth.se or lberlick@nanostring.com